

# G-448HD



## WARNING

This manual is for the exclusive use of dealers accredited by Motrec International Inc. and should not be considered an official document constituting any kind of guarantee for the end user. All information and data are subject to change without notice. All photos contained in this document are for illustrative purposes only and may include non-applicable options.

### PARTS:

It is recommended that part numbers be confirmed with Motrec International Inc. before ordering by providing the serial number of the vehicle requiring the part. In some cases, the part installed on the vehicle may differ from the manual depending on the options chosen.

---

Publication date:

**July 1, 2015**

Edition for vehicles with  
a serial number higher than:

**1037388**

For additional information,  
please contact our customer service:

### MOTREC INTERNATIONAL INC.

200 Des PME Street  
Sherbrooke, Quebec J1C 0R2  
Canada  
1-866-846-3558

## AVERTISSEMENT

Ce manuel est destiné à l'usage exclusif des concessionnaires accrédités par Motrec International Inc. et n'est pas considéré comme un document officiel pouvant servir de garantie pour l'utilisateur final. Les informations et données sont assujetties à des changements sans préavis. De plus, les photos présentées sont à titre indicatif seulement et pourraient inclure des options non applicables.

### PIÈCES:

Il est recommandé de valider les numéros de pièces avec Motrec International Inc. avant de commander, en fournissant le numéro de série du véhicule pour lequel la pièce est requise. Dans certains cas, il est possible que la pièce installée sur le véhicule diffère du manuel en fonction des options choisies.

---

Date de publication:

**1<sup>er</sup> juillet 2015**

Édition destinée aux véhicules ayant  
un numéro de série supérieur à:

**1037388**

Pour toutes informations additionnelles,  
contactez notre service à la clientèle:

### MOTREC INTERNATIONAL INC.

200, rue des PME  
Sherbrooke, Québec J1C 0R2  
Canada  
1-866-846-3558

# MOTREC



## G-448HD



<p><b>OPERATOR AND MAINTENANCE MANUAL SPARE PARTS LISTS INCLUDED</b></p>
--

SERIAL NUMBER : 1037388 & UP

Printed in Canada

## **One Year Limited Warranty**

Effective April 25, 2005, MOTREC, Inc. (MOTREC) hereby warrants to the Original Retail Purchaser (Owner) that any of its vehicles shall be free from any defect in materials for a period of 90 DAYS while in the possession of such Original Retail Purchaser. This warranty IS NOT TRANSFERABLE to any subsequent Buyer.

The warranty period is extended to one year or one thousand (1,000) hours, which ever first occurs, on the electric motor, differential (parts that bathe in oil) and the electronic speed controller. MOTREC makes no warranty or representation with respect to the internal combustion engine, tires and batteries, since their respective manufacturers cover such parts. Accessories (light, gage, horn, etc), electrical contacts (switch, solenoid, contactor, relay), diodes & fuses, belts & pulleys, filters & spark plugs, lubricants, brake linings & shoes, brake drums & discs, seals, seats, trim and other items subject to wear are not included in this warranty; nor is any item that in MOTREC sole opinion, shows evidence of neglect, misuse, abuse, collision or alteration.

This warranty shall not apply to normal maintenance requirements as described in the User Manual, and to damages during shipment. The latter is the carrier's responsibility. No compensation will be allowed for delays.

To initiate warranty coverage on any MOTREC vehicle, the Dealer must complete and return the "Sales/Installation Report" to MOTREC within 30 days after delivery to the Original Retail Purchaser; or within 90 days after the delivery date to the Dealer, which ever occurs first. Failure to follow these procedures will result in considering the warranty coverage effective as of the shipment date from the factory.

The defective vehicle must be returned, at the Owner's expense, to an authorised MOTREC Dealer within 30 days after failure. The Owner will not be charged for parts and labour required for warranty repairs, which must be performed by an authorised MOTREC Dealer only. The vehicle will be returned at the owner's expense. The Warranty Claim Forms must be completed and returned with the defective part(s) to MOTREC within 30 days after repair was done. No compensation will be allowed for damages caused by vehicle downtime.

It is the responsibility of the owner of the vehicle to make sure that the driver is properly trained and instructed in the safety features and operation of the vehicle, including vehicle stability, as required by OSHA and ANSI-B56. Operators shall read, understand and follow the safety and operating instructions in MOTREC Manual before driving the vehicle. Operators shall not be permitted to drive the vehicle unless a complete and adequate training has been provided. Driving a vehicle constitutes a hazard. The driver is responsible for the control of the vehicle while driving and must always evaluate and care for all peculiar situations that he or she may meet while driving. The driver assumes the inherent hazards related to this activity. The vehicle is designed for off-road use only. MOTREC disclaims any liability for incidental or consequential damages, to include, but not be limited to, personal injury or property damage arising from vehicle misuse, lack of maintenance or any defect in the vehicle.

It is the responsibility of the Owner of the vehicle to make sure that the service technicians are properly trained as required by OSHA and ANSI-B56. Service technicians shall read, understand and follow instructions in the MOTREC manual before servicing the vehicle. Only qualified and authorized personnel shall be permitted to maintain, repair, adjust and inspect the vehicle.

MOTREC prohibits, and disclaims responsibility for, any vehicle modification altering the weight distribution and stability, increasing the speed or affecting the safety of the vehicle. Such modifications can cause serious personal injury or property damage for which MOTREC disclaims any responsibility.

For Owners that are located outside North America, the warranty period starts the date of shipment from the factory, and the defective parts must be returned at the Owner's expense to MOTREC prior to warranty repair.

## **TABLE OF CONTENTS**

<b>INSTRUCTIONS</b>	<b>4</b>
SAFETY WARNINGS FOR OPERATORS	5
VEHICLE CONTROLS (HYDROSTATIC KUBOTA – G-448HD)	6
FUEL TANK	6
<b>MAINTENANCE</b>	<b>8</b>
SAFETY WARNINGS FOR SERVICE TECHNICIANS	9
DECALS AND LABELS	10
PREVENTIVE MAINTENANCE SCHEDULE - MOTREC I.C. UNITS	11
OIL GRADE CHART	12
HYDRAULIC & PARKING BRAKES	13
FRONT AXLE AND STEERING	14
HYDROSTATIC PUMP – PORTS AND ADJUSTING SCREWS	15
<b>SPARE PARTS</b>	<b>16</b>
BODY, CAB, SEATS, TIRE	17
HYDROSTATIC DRIVE, REAR AXLE AND SUSPENSION	18
BRAKE CONTROLS	19
FRONT AXLE, SUSPENSION, STEERING, DISC BRAKES	20
ENGINE MUFFLER & MOUNTING, KUBOTA ENGINE	22
ELECTRICAL DIAGRAM – KUBOTA DIESEL START / CHARGE CIRCUIT	24
ELECTRICAL DIAGRAM – KUBOTA DUAL FUEL START / CHARGE CIRCUIT	25
ELECTRICAL DIAGRAM – KUBOTA GAS START / CHARGE CIRCUIT	26
ELECTRICAL DIAGRAM – KUBOTA TRANSMISSION / ENGINE MANAGEMENT	27
ELECTRICAL DIAGRAM – KUBOTA ACCESSORIES	28
HYDRAULIC DIAGRAM	31
MOTREC ILLUSTRATED ACCESSORIES	34

**INSTRUCTIONS**

## **SAFETY WARNINGS FOR OPERATORS**

<b>FAILURE TO OBEY THE FOLLOWING SAFETY RULES MAY RESULT IN SEVERE INJURY.</b>
--

It is the responsibility of the owner of this vehicle to train operators to ensure that they understand the operating characteristics of this vehicle, including training in vehicle stability, and obey the following safety rules and guidelines. Owner shall comply with OSHA and ANSI/ITSDF B56.8 & B56.9 Standards for vehicle use, safety rules, operator training and certification. Do not drive this vehicle unless you are a certified operator.

- Do not drive this vehicle under the influence of drugs or alcohol.
- Do not drive this vehicle on public roads and highways. This vehicle is designed to be driven in buildings.
- This vehicle can make sparks which can ignite inflammable materials. Never use the vehicle in hazardous areas where there are inflammable materials, explosive dust or fumes in the air.
- Never run the engine in a confined area and avoid inhaling engine poisonous fumes which contain CO.
- Have your vehicle inspected regularly by trained personnel, and cease operation if a malfunction occurs.
- Do not open motor compartment. Keep clear from moving, rotating(wheels, sheaves, etc) or lifting parts.
- Keep clear from hot parts of exhaust system.
- Never carry more passengers than number allowed for this vehicle. Wait until all occupants are seated and holding on before moving. Always keep all body parts inside vehicle. Keep both hands on steering wheel.
- Do not exceed the vehicle cargo load capacity and gross trailing weight capacity, rated for flat hard even surface. Different operating conditions such as loose terrain or ramps reduce vehicle capacity.
- Avoid loose, unbalanced or top-heavy loads to keep a good stability and prevent overturn. Do not load cargo that can fall off the vehicle. Do not carry cargo that is longer, wider or higher than this vehicle.
- Always depress slowly the accelerator for smooth acceleration. Avoid stunt driving or horseplay.
- Avoid sharp turns, always slow down before turning, to prevent vehicle overturn or trailer jack knife. Vehicle is more sensitive to overturn and jack knife when traveling on inclines or when carrying a heavy load.
- Always drive straight up and down the face of an incline, never across the face, to prevent overturn and trailer jack knife. Drive slower and start applying brakes sooner on inclines to adjust for longer stopping distance.
- Use extra care and drive slowly in reverse, in congested areas or on wet or slippery ground.
- Keep to the right under normal conditions. Maintain a safe distance from all objects.
- Slow down and sound the horn when approaching a corner or other blind intersections.
- Before leaving the vehicle, park on level ground flat surface, turn off all switches, set forward/reverse selector to neutral, set parking brake, remove the key. Do not park the vehicle on an incline.
- Use another driver to steer this vehicle while it is towed. Be sure the driver uses brakes when you slow or stop the towing vehicle. Do not exceed 5 MPH or carry any passenger while towing this vehicle.

## **VEHICLE CONTROLS (HYDROSTATIC KUBOTA – G-448HD)**

It is the responsibility of the owner of this vehicle to ensure that the operator understands the operating characteristics of this vehicle, and obeys the safety instructions in this manual and ANSI/ITSDF B56.8 & 9 Standards. Do not drive this vehicle unless you are a certified operator as required by OSHA.

### **Fuel Tank**

The fuel tank is located on the right at the rear. Do not remove the fuel cap while the engine is running. Do not fill the fuel tank to point of overflowing. Use clean, fresh, lead-free gasoline intended for automotive use. A minimum of 85 octane is recommended. Do not mix oil with gasoline.

### **Engine Oil**

Never open engine compartment while engine is running. Before checking engine oil, stop engine. Avoid touching hot engine, muffler and exhaust parts.

### **Hydraulic oil tank**

The hydraulic oil tank is located on the left at the rear. Do not remove the oil cap while the engine is running. Do not fill the oil tank to point of overflowing. Use hydraulic oil meeting ISO VG-46

### **Oil sentry**

When the red light on the instrument panel turns on, the engine oil pressure is too low, or engine temperature is too high. Therefore, the engine must be serviced to avoid serious damage.

### **Horn button**

The horn button is located on the steering column.

### **Park brake lever**

To actuate the parking brake, depress the brake pedal and pull up the hand lever located between the front seats. Never park on an incline. Always set the parking brake before leaving the vehicle.

### **Accelerator and brake pedals**

The accelerator and brake pedals operate the same way as the pedals of an automobile. Depress the accelerator pedal with the right foot to speed the vehicle up and release it to slow down. Depress the brake pedal with the right foot to reduce the vehicle speed.

### **Forward/Reverse Selector**

Shift only when the vehicle is not moving and engine is at idle speed. Before leaving the vehicle, set the FWD/REV selector to NEUTRAL and set the parking brake.

### **Manual Choke**

GAS ENGINE: before starting a cold engine, pull out the choke knob and depress the accelerator pedal halfway to the floor; as the engine warms up, push the knob in until the engine responds properly.

LPG ENGINE: before starting the engine, pull out the choke and depress the accelerator pedal halfway to the floor; while starting, after two seconds, push the knob halfway; as the engine warms up, push the knob in until the engine responds properly.

### **Key switch / starter**

Before starting set the FWD/REV shifter to NEUTRAL, set parking brake, check for visible damage, check brake pedal. To avoid starter damage do not crank the engine continuously for more than 10 seconds at a time;

## *Instructions*

---

wait 60 seconds before attempting to start again. Before moving check safety devices: reverse alarm, strobe light, motion beeper and all other safety devices. Before leaving vehicle, set FWD/REV shifter to NEUTRAL, set parking brake, remove key.



**MAINTENANCE**

## **SAFETY WARNINGS FOR SERVICE TECHNICIANS**

FAILURE TO OBEY THE FOLLOWING SAFETY RULES MAIN RESULT IN SEVERE INJURY.

Owner shall comply with OSHA and ASME/ANSI B56.8 & B56.9 regulations for vehicle maintenance.

Only qualified and authorized personnel shall be permitted to maintain, repair, adjust and inspect carriers, vehicles, tractors, and batteries.

Maintenance operations must be made by properly trained service technicians.

Before any maintenance work, park the vehicle on a flat level surface, set the shift lever to park, turn off all the switches, remove the key, lift the wheels off the ground and secure with jack stands of adequate capacity.

Keep clear from moving parts such as tires, sheaves, drive shaft and engine.

Keep clear from hot parts of exhaust system.

Avoid increasing engine RPM and vehicle speed to prevent accident and severe injuries.

Follow the maintenance instructions applicable to the type of repair, maintenance, or service.

Always wear a face shield and gloves when working around batteries. Use insulated tools to avoid sparks that can cause battery explosion and acid splashing. Use two counteracting tools, double-wrench technique, when disconnecting or tightening terminals on the battery to avoid damaging battery posts.

Keep cables and wires clear from mechanical and rubbing action. Make sure cable covering is free from cutting or visible damage.

Before replacing a fuse or circuit breaker, identify the cause of failure and repair.

Always ensure the integrity of the warning labels. If they suffered damage and are not readable, replace them promptly. The following images depict the dashboard and general security warning labels:

## DECALS AND LABELS

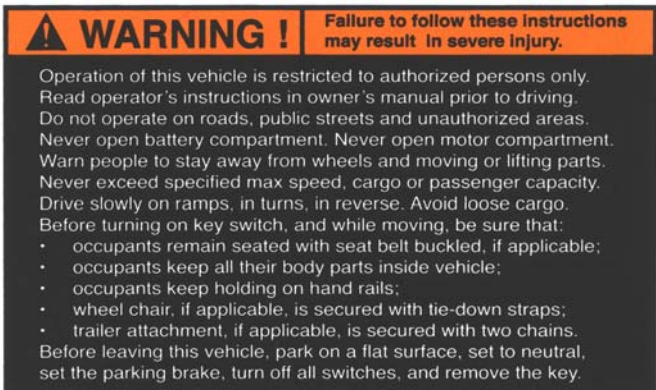
### ! CAUTION !

The images included in this section depict the decals/markings installed on the vehicle. It is of the utmost importance that these decals/markings remain unaltered and readable. Else, the sticker or the part bearing the marking has to be replaced.

Dashboard security warning label:  
# 5100000002



General security warning label:  
# 5100000001



When an emergency push button is installed, this label is required (located under push button): # 3109800006



When a disconnect handle is installed, this label is required (located in front of handle):  
# 4800012J



Respectively, key switch markings, forward/reverse selector markings and light switch marking:



# 266211



# 2819321003



# 1269004

## **PREVENTIVE MAINTENANCE SCHEDULE - MOTREC I.C. UNITS**

**! WARNING !** Read safety instructions before maintenance operations to avoid severe injury.

**! WARNING !** Maintenance operations must be made by properly trained service technicians.

Follow OSHA and ANSI B56 regulations.

**Change engine oil after first 8 hours of use. S/N: \_\_\_\_\_ Hour Meter reading: \_\_\_\_\_**

DESCRIPTION	PERIOD	ESTIMATED TIME (MINUTES)					CHECK
		SHIFT START	100H	200 H	1000 H	YEAR	
Stop engine, check engine oil level.		3					
Check vehicle for visual damage		2					
Examine floor around and beneath unit for signs of transmission oil, differential oil, brake fluid leaks.		2					
Turn steering, check for hard steering, excessive free play, or unusual sound when turning.		1					
Check accelerator for free & smooth movement.		2					
Shift in neutral, before starting engine.		1					
Check reverse alarm, horn, strobe light.		2					
Check brake pedal travel and parking brake for secure hold. Start slowly and check service brake.		2					
Check tire pressure, see pressure rating on tire			5				
Check transmission & hydraulic oil level, if appl.			5				
Check radiator coolant level, if applicable.			2				
Check master cylinder fluid level (DOT 3)			2				
Check brake pedal travel			1				
Turn front wheels straight, check steering play			1				
Check parking brake, requires 10 lbs. force to apply			1				
Check brake lines and drive for leaks			5				
Check fuel pipe, hose, clamps for damage & leaks			5				
Check radiator fan belt, CVT belt, if applicable			3				
Service air filter, check intake pipe & clamps			5				
Check muffler, exhaust pipe, clamps, spark arrester			5				
Air cooled engines only, <b>change engine oil</b>			20(X)				
Water-cooled engines only, <b>change engine oil</b>				X(20)			
WARNING LABELS & MARKINGS				2			
Inspect wheel bearings and king pins for play				8			
Inspect steering suspension linkages & frame.				10			
Check pedal & master cylinder linkages for wear				10			
Check service brake linings and linkages for wear				15			
Check Spark Plugs				20			
Change Oil Filter				20			
Change air filter				10			
Clean radiators and engine shrouds				20			
Lubricate the vehicle				5			
Service fuel filter, LP vaporizer & regulator					20		
Check engine valve clearance & seats					40		
Check ignition wires, tighten all nuts and bolts					20		
Change differential oil, transmission oil & filter					20		
Clean & repack front hubs					20		
Flush/change brake fluid						30	
Flush/change radiator coolant, if applicable						30	
<b>TOTAL TIME (MINUTES)</b>		15	60	120	120	60	

### **OIL GRADE CHART**

Vehicle system	Oil grade	Note
<b>KOHLER engine</b>		
Above +32°F	10W-30	
Below +32°F	5W-30	
<b>KUBOTA engine</b>		
Above 77°F	30 or 10W-30 or 10W-40	
+32°F to 77°F	20 or 10W-30 or 10W-40	
Below +32°F	10W or 10W-30 or 10W-40	
<b>Hydrostatic transmission</b>	ISO VG46	
<b>Brakes</b>	DOT 3	DMVSS116 standard

## **HYDRAULIC & PARKING BRAKES**

Revision 2008-02-06

### **DRUM BRAKES**

Remove brake drums and check lining wear. Replace shoes and springs if the lining thickness is 1/16" (2mm) or less. Turn the brake adjustment to reduce the clearance between lining and drum. Wheels must turn free when the pedal is released.

### **DISC BRAKES**

Check pad linings. Replace pads if lining thickness is 1/16" (2 mm) or less.

### **PARKING BRAKE**

Replace cables and stoppers if cable play exceeds 1/8" (4mm).

Wheels and/or differential pinion must turn freely when the parking brake is released.

On pinion brake, use spacers at pad fixed ends to reduce space between pads and pulley to 1mm.

To install new cables and stoppers:

- insert the new cable through the hand lever end;
- pull the cable out from the brake assembly end;
- insert the stopper on the cable and leave a maximum play of 1mm;
- for a two-cable system, make sure that cable length is the same at hand lever end;
- tighten 1/4-ncx3/4 grade-5 bolt in stopper at 8 LbFt (11NM) torque;
- cable must extend 1.5" (4cm) out of the cable stopper, cut cable excess.

Once cable play has been checked and/or adjusted, turn the knob on the brake lever until a force of 75 Lbs or 34 kg is required on the handle to set the parking brake.

### **BRAKE PEDAL**

If the brake pedal becomes soft or spongy, air may have entered the hydraulic system and the brake system has to be bled:

1. fill the master cylinder with brake fluid (DOT-3);
2. bleed front callipers one at a time by having someone applying a steady pressure on the brake pedal, and close the bleeder before allowing the brake pedal to return to up position;
3. fill the master cylinder with brake fluid (DOT-3);
4. bleed rear wheel brakes one at a time, following the same procedure;
5. fill the master cylinder with brake fluid (DOT-3);
6. clean every fitting and line, remove traces of oil;
7. apply a continuous pressure on the brake pedal for about five minutes ;
8. Finally, inspect brake lines and fittings for leaks ;

## **FRONT AXLE AND STEERING**

### **! CAUTION !**

Before maintenance, turn off all switches, set to neutral, set parking brake, remove the key, and raise the front end of the vehicle supporting it with two jack stands of adequate capacity

### **STEERING INSPECTION**

- Check tire inflation pressure, suspension components, tie rods straightness, tie rod ends play (wear), play (wear) in wheel bearings, kingpins and bushings.

### **REPLACING & ADJUSTING THE STEERING GEAR**

- Remove the pitman arm;
- The steering box makes 6.5 turns, center the steering gear (3.25 turns from either side);
- Align the front wheel straight. Install the pitman arm.

### **TOE-IN ADJUSTEMENT**

- With the wheels in straight forward direction, measure the inside (left to right) distance between the front tires, at the front and rear of the tires;
- Turn the rear tie rod until the distances are equal and tighten the two lock nuts on the tie rod.

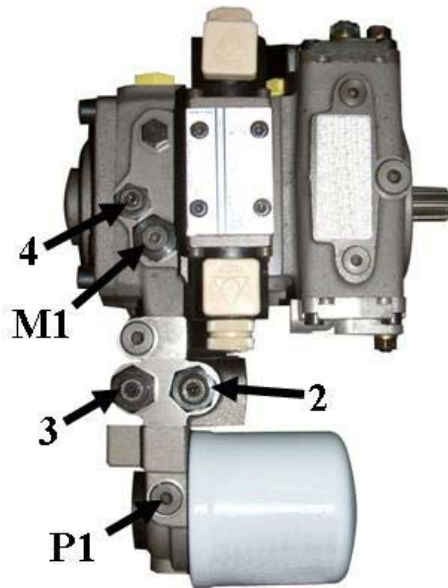
### **REMOVING & GREASING OF FRONT HUBS, required once-a-year**

- Remove dust cap and cutter pin, unscrew nut, remove hub;
- Inspect bearings and races for wear and replace worn bearings;
- Replace the seal;
- Pack the hub with wheel bearing grease and re-assemble.

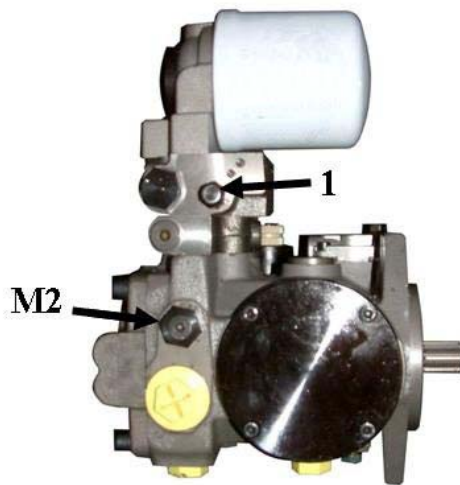
### **ADJUSTING FRONT HUBS**

- Tighten spindle nut to 30 ft-lb to seat the bearing and back off the nut to the next slot;
- Install a new cutter pin and the dust cap.

## HYDROSTATIC PUMP – PORTS AND ADJUSTING SCREWS



1	MACHINE RPM START-UP ADJUSTING SCREW Turn CW to increase RPM
2	POWER LIMITER ADJUSTING SCREW Turn CW to increase power
3	MINIMUM CHARGE PRESSURE ADJUSTING SCREW Turn CW to increase pressure
4	CHARGE PRESSURE ADJUSTING SCREW Turn CW to increase pressure
P1	CHARGE PRESSURE INTAKE
M1	HIGH PRESSURE SIDE A
M2	HIGH PRESSURE SIDE B





**SPARE PARTS**

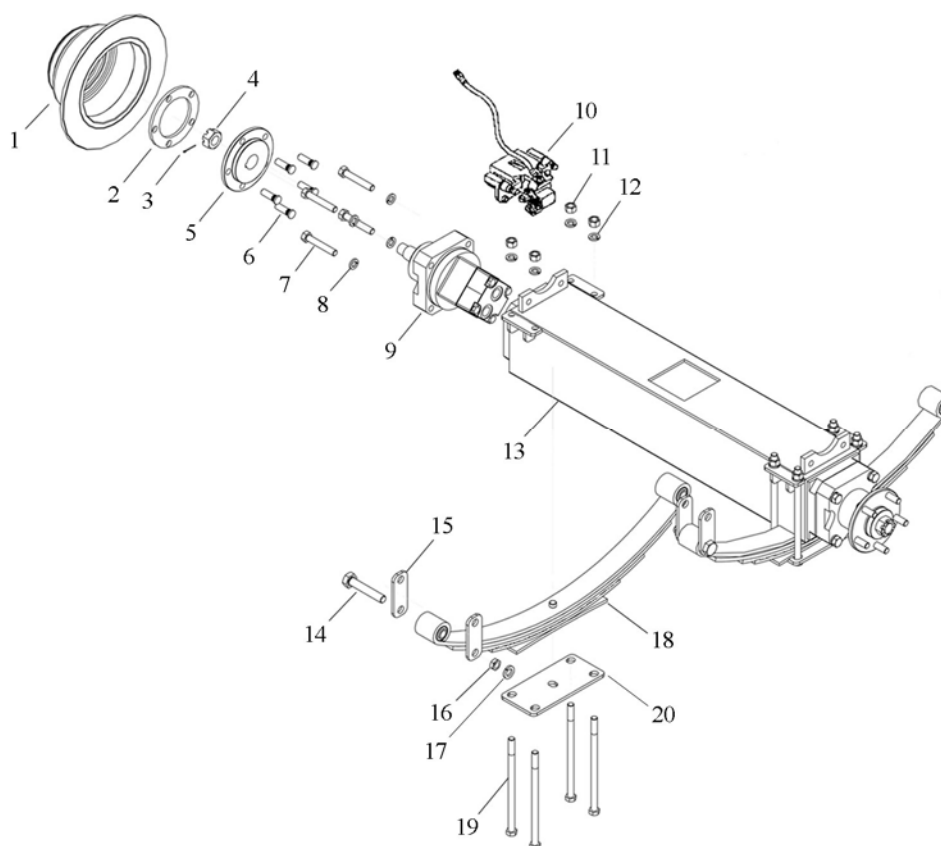
**BODY, CAB, SEATS, TIRE**

REF	DESCRIPTION	PART #	REF	DESCRIPTION	PART #
1	BUCKET SEAT ON SLIDE ADJUSTERS	1005003		CATCH HANDLE	3602024 2366320001
2	LEFT ENGINE COVER	*		OPENING HANDLE	2366320003
	RIGHT ENGINE COVER	*		OPENING BAR	2366320004
	LPG TANK HOLDER	2391501001		RIGHT HINGES	2365000001
3	5-B, 18" OD, LUG, SOLID WHEEL	2223360001		LEFT HINGES	2365000002
4	FRONT BUMPER	2314320001		REAR VIEW MIRROR	480039
5	MOTOR COMP. GRID	2819449001		SIDE MIRROR	480040
6	STEEL CAB AND DOORS <sup>1</sup>	2360321002		MIRROR BRACKET FIXE	2399300014
	STEEL CAB <sup>1</sup>	2360320001		MIRROR BRACKET FOLDING	2399300009
	RIGHT DOOR	2360320014		WIPER KIT	366211K
	LEFT DOOR	2360320015		WIPER MOTOR 12V	3113000001
	DOOR GLASS LEFT	2367320001		ARM	2800000001
	DOOR GLASS RIGHT	2367320002		WIPER	2800000002
	PADDLE LATCH	2803000003			

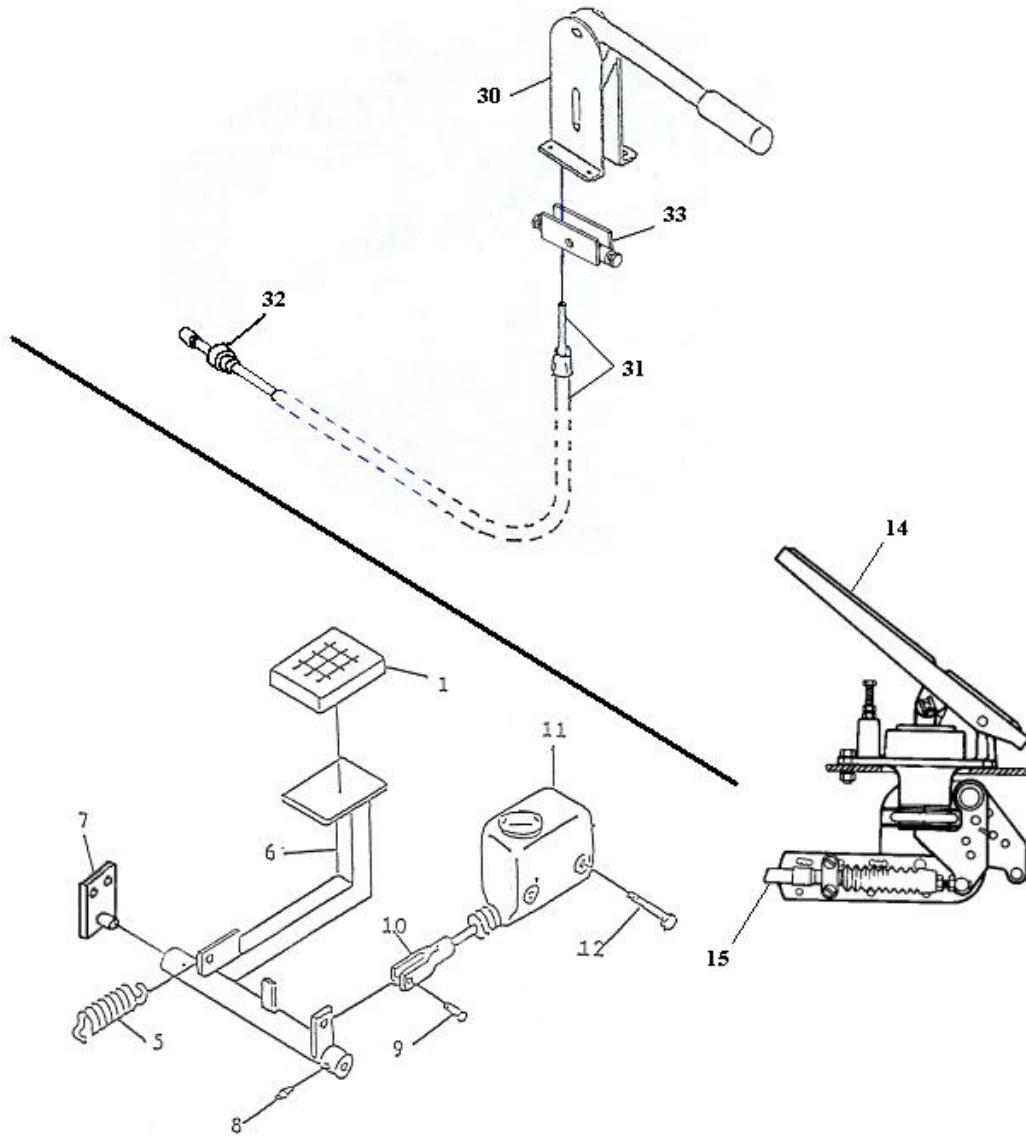
\* Contact manufacturer

<sup>1</sup> With A/C, see addendum

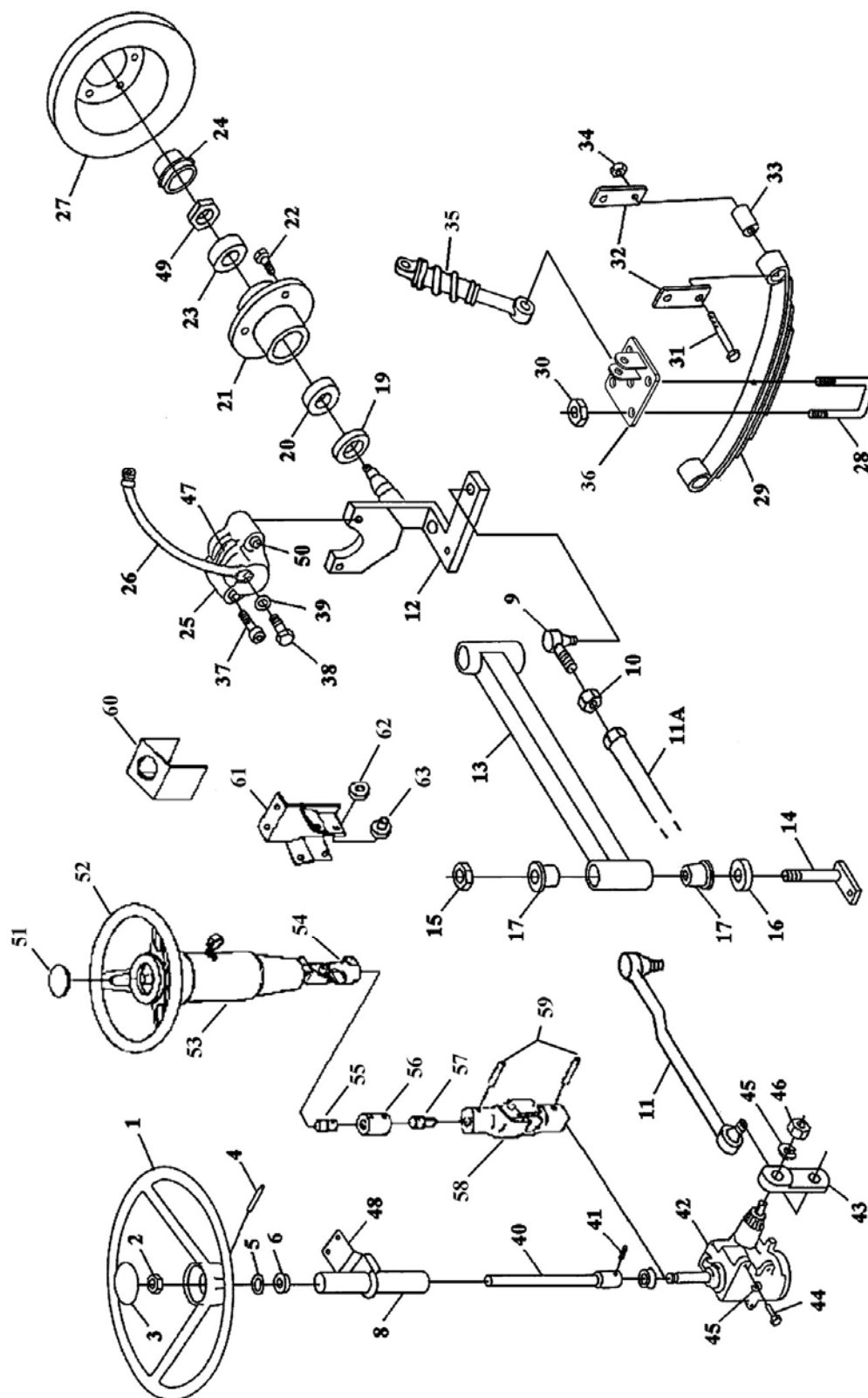
## **HYDROSTATIC DRIVE, REAR AXLE AND SUSPENSION**



<b>REF.</b>	<b>PART NO</b>	<b>DESCRIPTION</b>
<b>1</b>	481433	DISC
<b>2</b>	5007001	SPACER
<b>3</b>		COTTERPIN
<b>4</b>	2910322001	CASTELLATED HUB NUT
<b>5</b>	2224322001	HUB
<b>6</b>	2820007	STUD ½ NF X 1 ¾
<b>7</b>		BOLT ½ NF X 2 ½
<b>8</b>		LOCK WASHER ½
<b>9</b>	CALL FACT.	HYDRAULIC MOTOR
<b>10</b>	5016002	RIGHT CALIPER
	5016003	LEFT CALIPER
	5016004	L/R PAD SET
<b>11</b>		NUT ½ NF
<b>12</b>		LOCKWASHER ½
<b>13</b>	2177322006	48" HOUSING
<b>14</b>		BOLT 5/8-NC X 3 ½
<b>15</b>	362606	SHACKLE LINK
<b>16</b>		NUT 5/8-NC
<b>17</b>		LOCKWASHER
<b>18</b>	5040003	LEAF SPRING
<b>19</b>		BOLT ½ NF X 9 ½
<b>20</b>	2185322001	MOUNTING PLATE

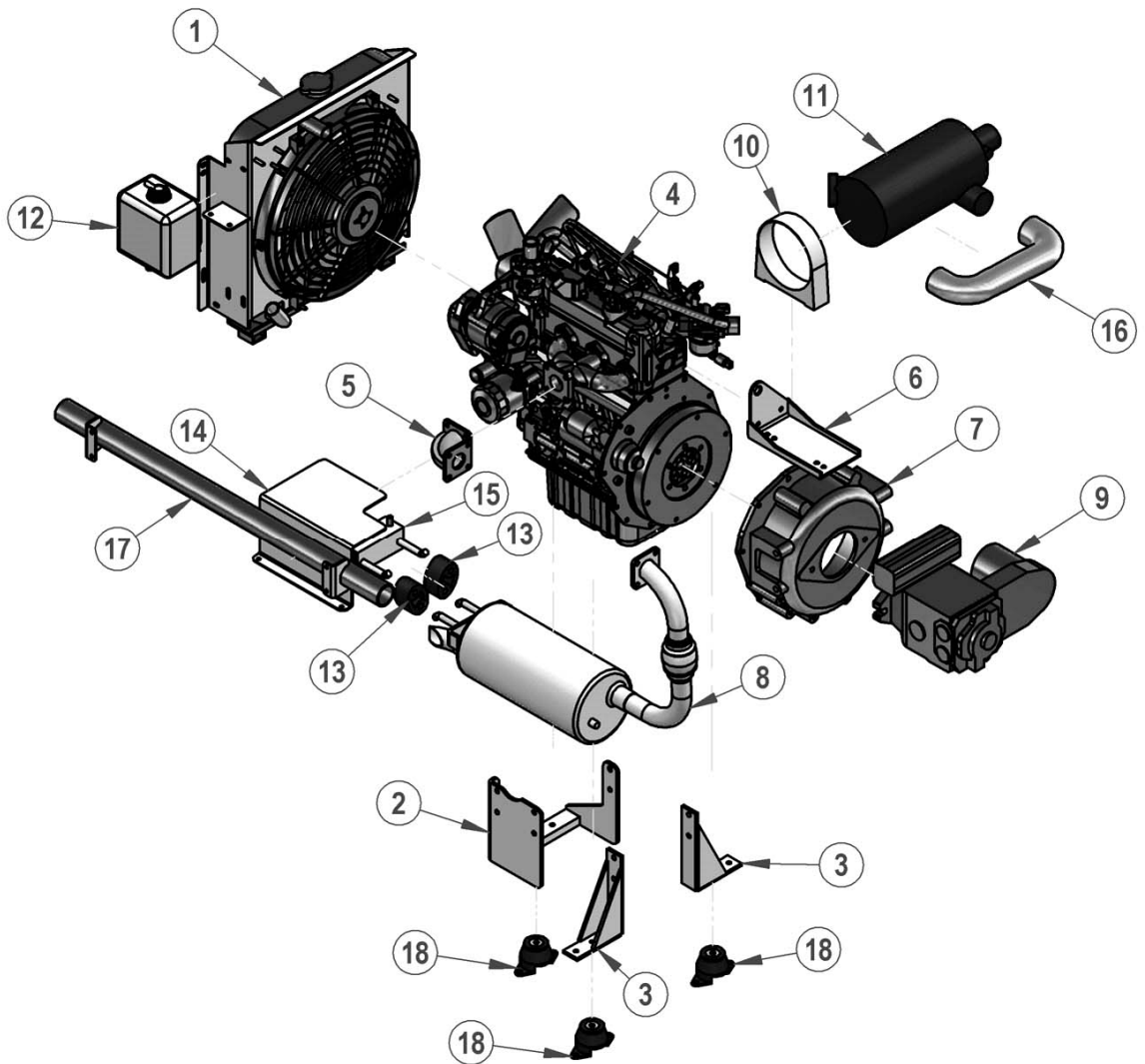
**BRAKE CONTROLS**

REF	PART NO	DESCRIPTION	QTY	REF	PART NO	DESCRIPTION	QTY
1	242800	RUBBER	1	14	6685001	ACCELERATOR PEDAL	1
5	242816	SPRING	1	15	CALL FACT.	ACCELERATOR CABLE	1
6	2131501001	LEVER	1				
7	262807	PIVOT	2	30	3616013	8 in. HANDBRAKE LEVER	1
8	242817	LUBRICATING FITTING	1	31	2129000003	CABLE	2
9		CLEVIS PIN 3/8 X 1	1	32	5016001	CABLE STOP	2
10	122813	YOKE	1	33	2130330001	CABLE RETAINER	2
11	362805	MASTER CYLINDER	1				
12		BOLT 3/8-NC X 3	2				



REF	PART NO	DESCRIPTION	REF	PART NO	DESCRIPTION
1	2208240001	STEERING WHEEL	31		BOLT 5/8-NC
2	2910000022	NUT 3/4-16	32	2182320001	SHACKLE LINK
3	2208240002	COVER	33	2183240002	BUSHING
4	2910000023	PIN	34		NUT 5/8-NC
5	2104300004	OIL SEAL	35	2180240001	SHOCK ABSORBER
6	2100300002	BUSHING	36	2184448001	PLATE
7	2100300003	BUSHING	37	2910000017	BOLT, LONG
8	2200300002	TUBE		2910000018	BOLT, SHORT
9	2207000001	ROD END, LEFT HAND	38	2139000003	BOLT
	2207000002	ROD END, RIGHT HAND	39	2139000002	WASHER
10	2910000005	NUT, LEFT HAND	40	2200300003	SHAFT
	2910000006	NUT, RIGHT HAND	41	2910000024	SCREW
11	2207320001	FRONT TIE ROD	42	2117250001	GEAR
11A	2207300006	TIE ROD		4430002	GEAR FOR TILT/TEL. STEERING
12	2201360002	RIGHT AXLE	43	2207320009	ARM
	2201662002	RIGHT AXLE , P. STEERING	44		BOLT 7/16-NC
	2201360001	LEFT AXLE	45	2910000020	LOCK WASHER
	2201662003	LEFT AXLE, P. STEERING	46	2910000021	NUT
13	2201320001	AXLE BEAM	47	2128280001	PADS
	2201448009	AXLE BEAM, P. STEERING	48	2206300003	STEERING SUPPORT
14	2205250001	KING PIN	49	2910300002	CASTELLATED NUT
15	2910300001	NUT 3/4-NF	50	2121000005	BUSHING, LONG
16	2103250001	THRUST BEARING		2121000006	BUSHING, SHORT
17	2914364001	BUSHING	51	2330014	HORN COVER
19	2229300002	OIL SEAL	52	2330013	STEERING WHEEL
20	2103300001	TAPER BEARING	53	2230014	ADJUSTABLE COLUMN
21	2224300001	HUB	54	2330015	UNIVERSAL JOINT
22	2910300003	WHEEL BOLT	55	2200224003	SHAFT
23	2103300002	TAPER BEARING	56	2200224001	NYLON COUPLER
24	2229300001	DUST CAP	57	2200224002	SHAFT
25	481431	RIGHT CALIPER	58	4430001	UNIVERSAL JOINT
	481430	LEFT CALIPER	59	2910000024	SCREW
26	2134000001	FLEX. HOSE	60	2392224001	SELECTOR BOX
27	2120236001	DISC	61	2206224001	COLUMN MOUNTING PLATE
28	2916000001	U-BOLT	62	2230016	NYLON WASHER
29	2192280001	LEAF SPRINGS	63	2230017	NYLON BUSHING
30		NUT 1/2-NF			

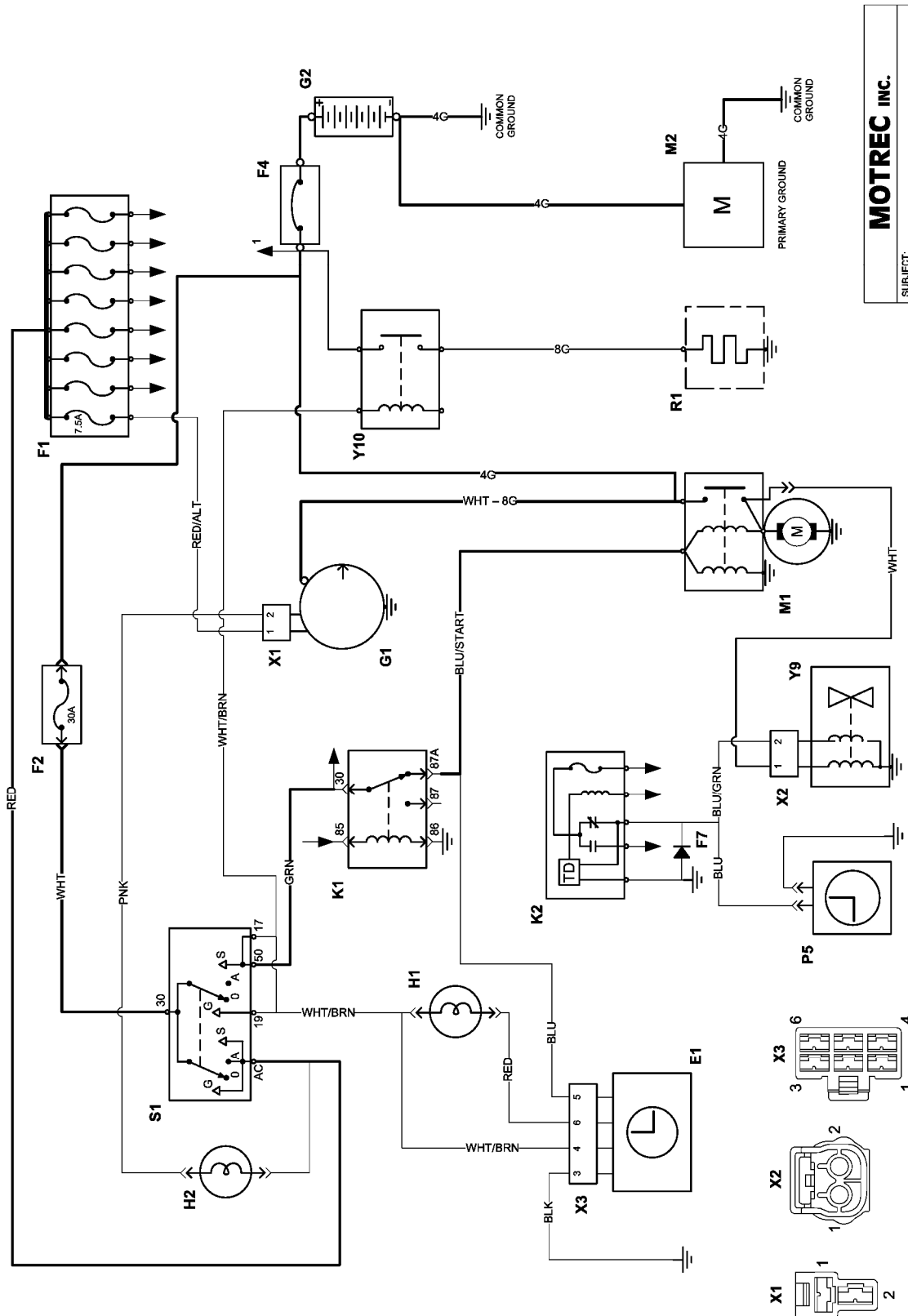
**ENGINE MUFFLER & MOUNTING, KUBOTA ENGINE**



<b>REF</b>	<b>PART NO</b>	<b>DESCRIPTION</b>
<b>1</b>	2169501036	RADIATOR
	2169449004	RADIATOR SUPPORT
	2169661018	AIR DEFLECTOR – TOP
	2169501027	AIR DEFLECTOR – BOTTOM
	2819449004	RADIATOR GRID
	3129501004	COOLING FAN
	246101	SOLENOID
<b>2</b>	2160501006*	ENGINE SUPPORT – FRONT
<b>3</b>	2160501002	ENGINE SUPPORT – REAR
<b>4</b>	2150449001	KUBOTA DUAL FUEL ENGINE KIT
	2150449002	KUBOTA GAS ENGINE KIT
	2150449003	KUBOTA DIESEL ENGINE KIT
<b>5</b>	2157501011	90° EXHAUST
	2157501012	EXHAUST GASKET
<b>6</b>	2169501030	AIR FILTER SUPPORT
<b>7</b>	2169501039	ADAPTOR – MOTOR / PUMP
	2169501040	PUMP COUPLING
	2169501041	MOTOR COUPLING
<b>8</b>	2157661001	CATALITIC MUFFLER
<b>9</b>	4160322001	HYDROSTATIC PUMP
<b>10</b>	2169501034	AIR CLEANER MOUNTING BAND
<b>11</b>	2169501033	AIR CLEANER
<b>12</b>	2604501002	RESERVE TANK – PRESTONE
<b>13</b>	2169501026	RUBBER MOUNT MUFFLER
<b>14</b>	2169449001	HEAT SHIELD
<b>15</b>	2169449010	MUFFLER HOLDER
<b>16</b>	2913501002	AIR INTAKE FLEXIBLE TUBE
	2169501035	INTAKE – AIR FILTER TUBE
<b>17</b>	2169449005	AIR INTAKE TUBE
<b>18</b>	consult manuf.	ENGINE RUBBER MOUNT

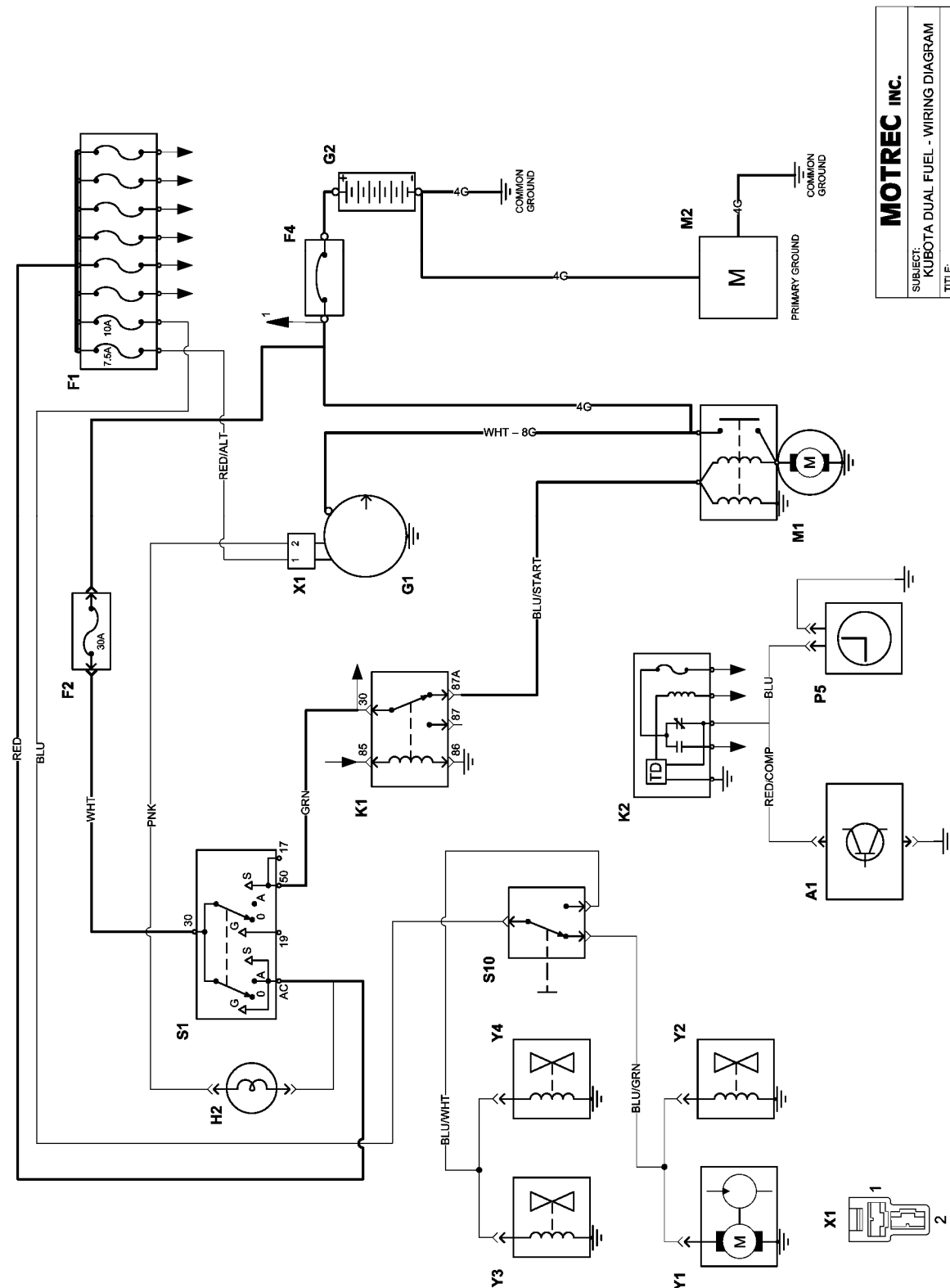
\* WITH A/C, SEE ADDENDUM



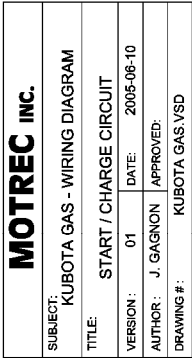
**ELECTRICAL DIAGRAM – KUBOTA DIESEL START / CHARGE CIRCUIT**

<b>MOTREC INC.</b>			
SUBJECT:	KUBOTA DIESEL - WIRING DIAGRAM		
TITLE:	START / CHARGE CIRCUIT		
VERSION:	01	DATE:	2005-06-10
AUTHOR:	J. GAGNON	APPROVED:	
DRAWING #:	KUBOTA DIESEL.YSD		

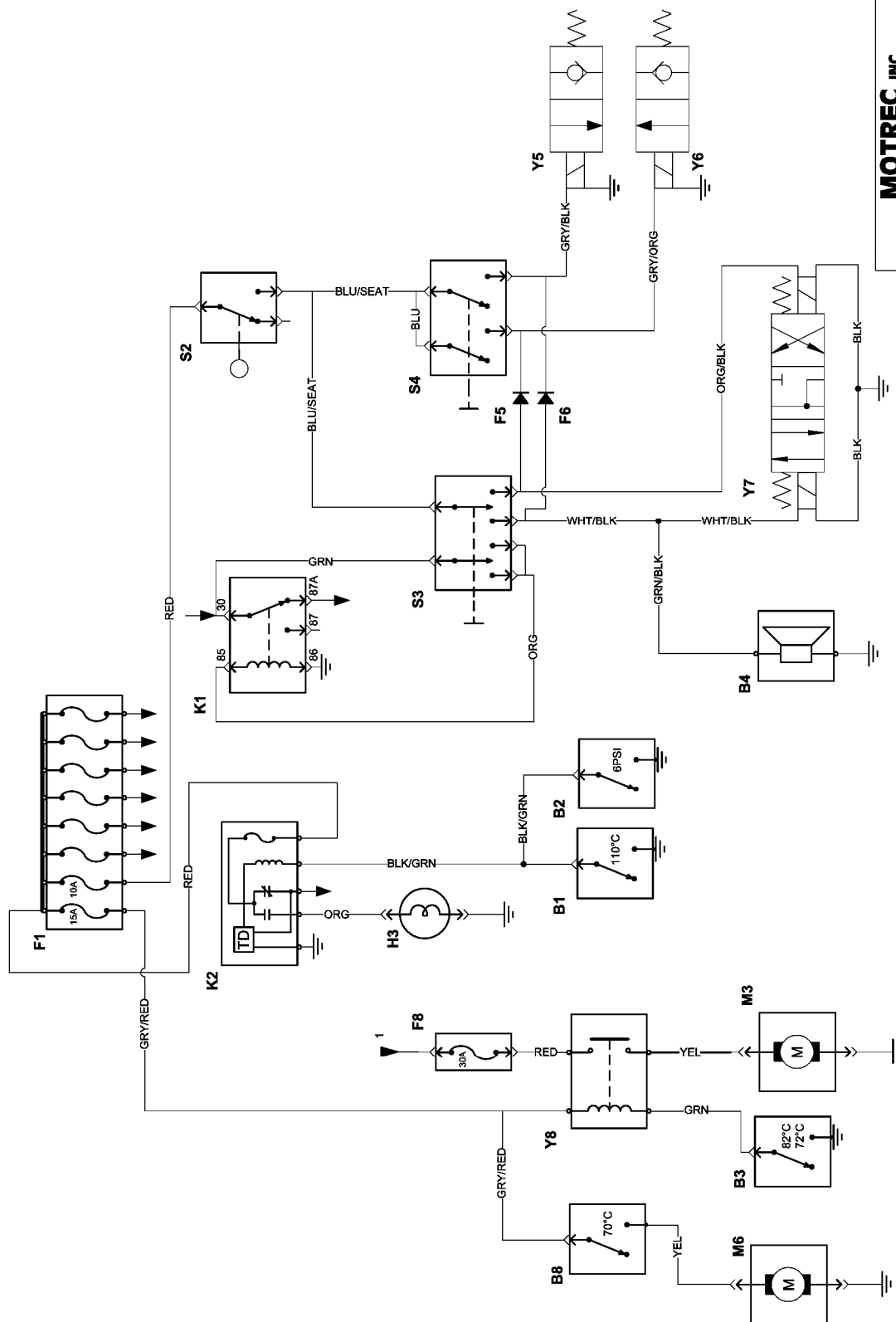
**ELECTRICAL DIAGRAM – KUBOTA DUAL FUEL START / CHARGE CIRCUIT**



<b>MOTREC INC.</b>			
SUBJECT: KUBOTA DUAL FUEL - WIRING DIAGRAM			
TITLE: START / CHARGE CIRCUIT			
VERSION: 01	DATE: 2005-06-10		
AUTHOR: J. GAGNON	APPROVED:		
DRAWING #: KUBOTA DUAL FUEL.VSD			

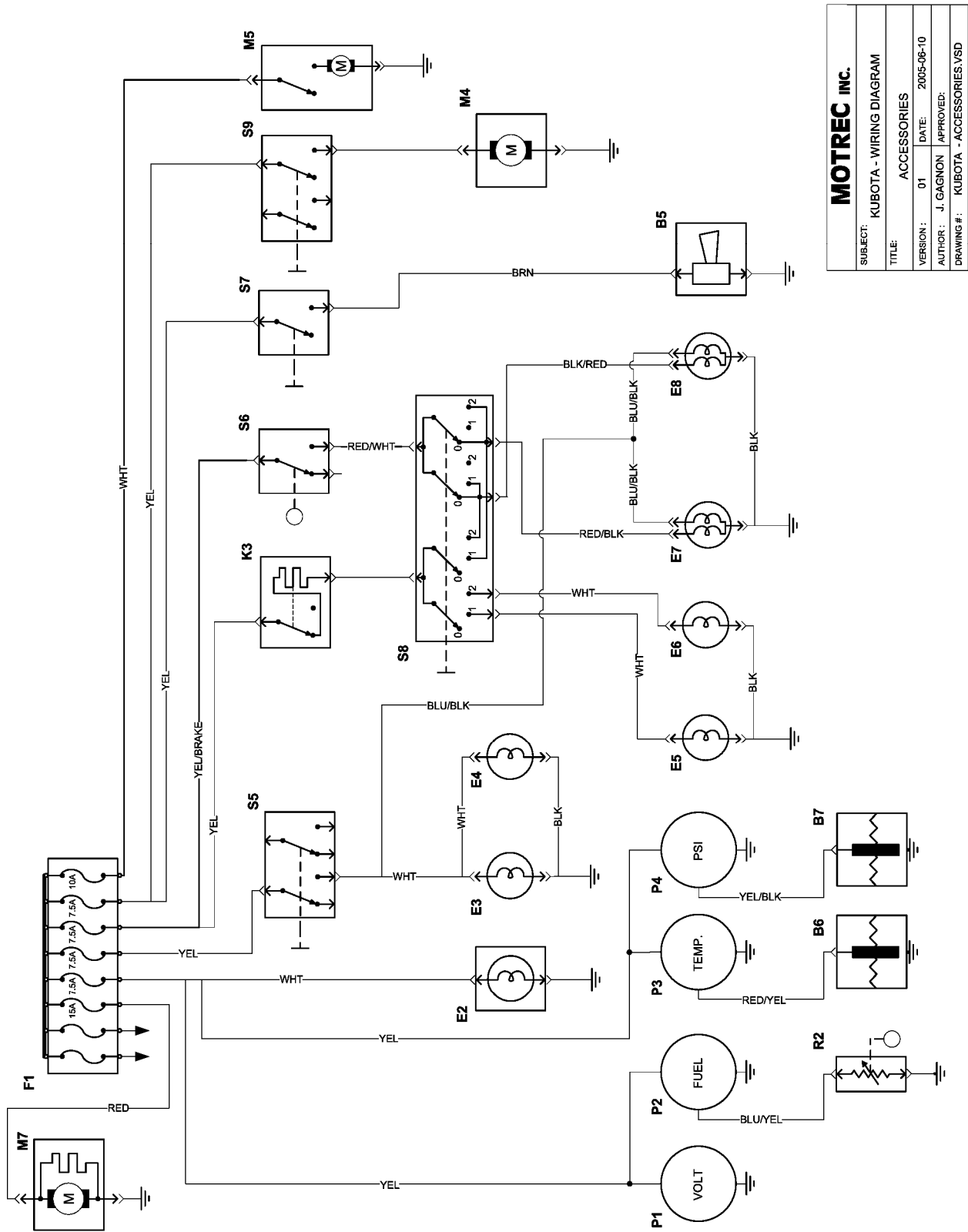


# ELECTRICAL DIAGRAM – KUBOTA TRANSMISSION / ENGINE MANAGEMENT



<b>MOTREC INC.</b>			
SUBJECT:	KUBOTA - TRANSMISSION & ENGINE		
TITLE:	TRANSMISSION / ENGINE MANAGEMENT		
VERSION:	01	DATE:	2005-11-30
AUTHOR:	J. GAGNON	APPROVED:	
DRAWING #:	KUBOTA - TRANSMISSION AND ENGINE MANAGEMENT.VSD		

ELECTRICAL DIAGRAM – KUBOTA ACCESSORIES

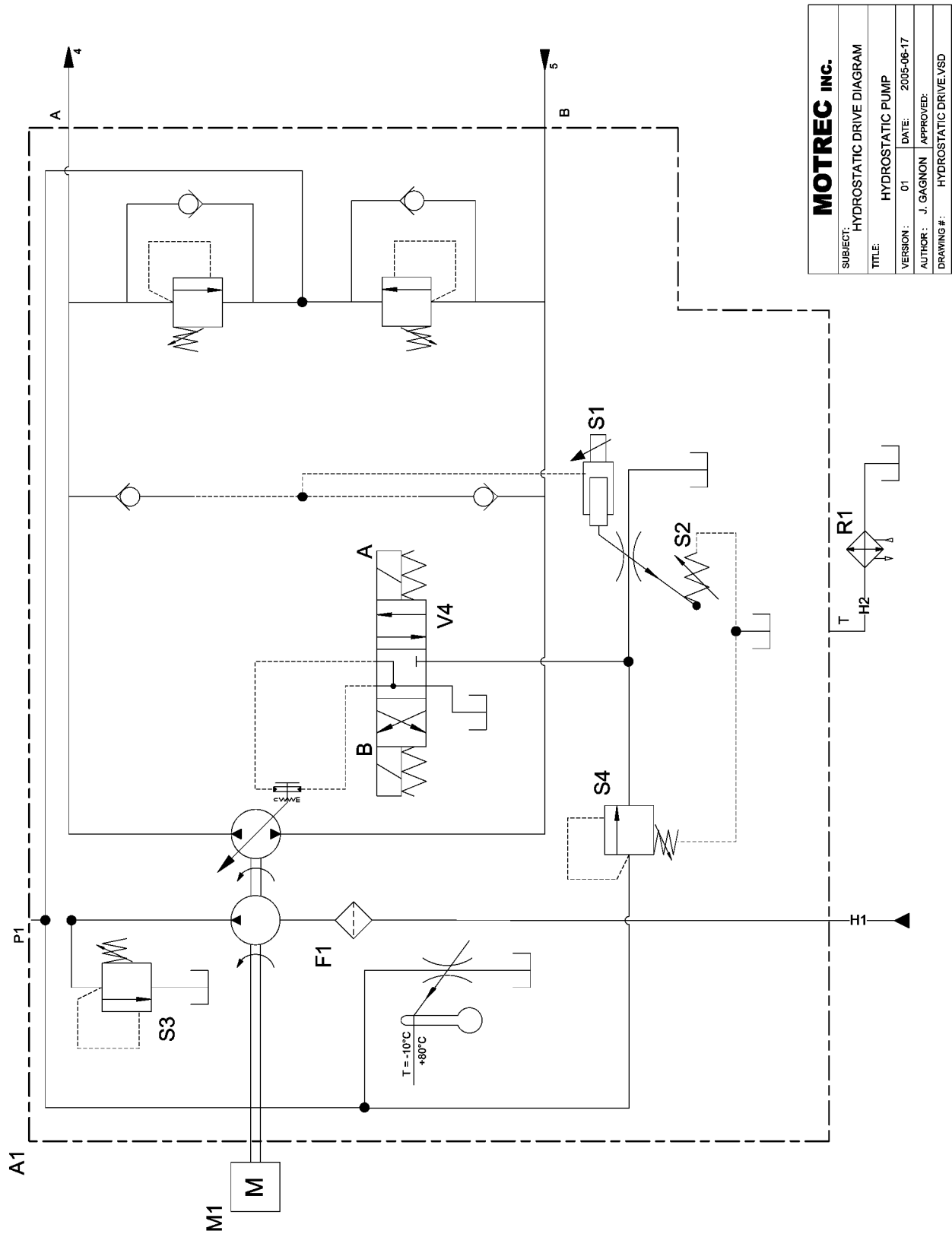


## PARTS LIST

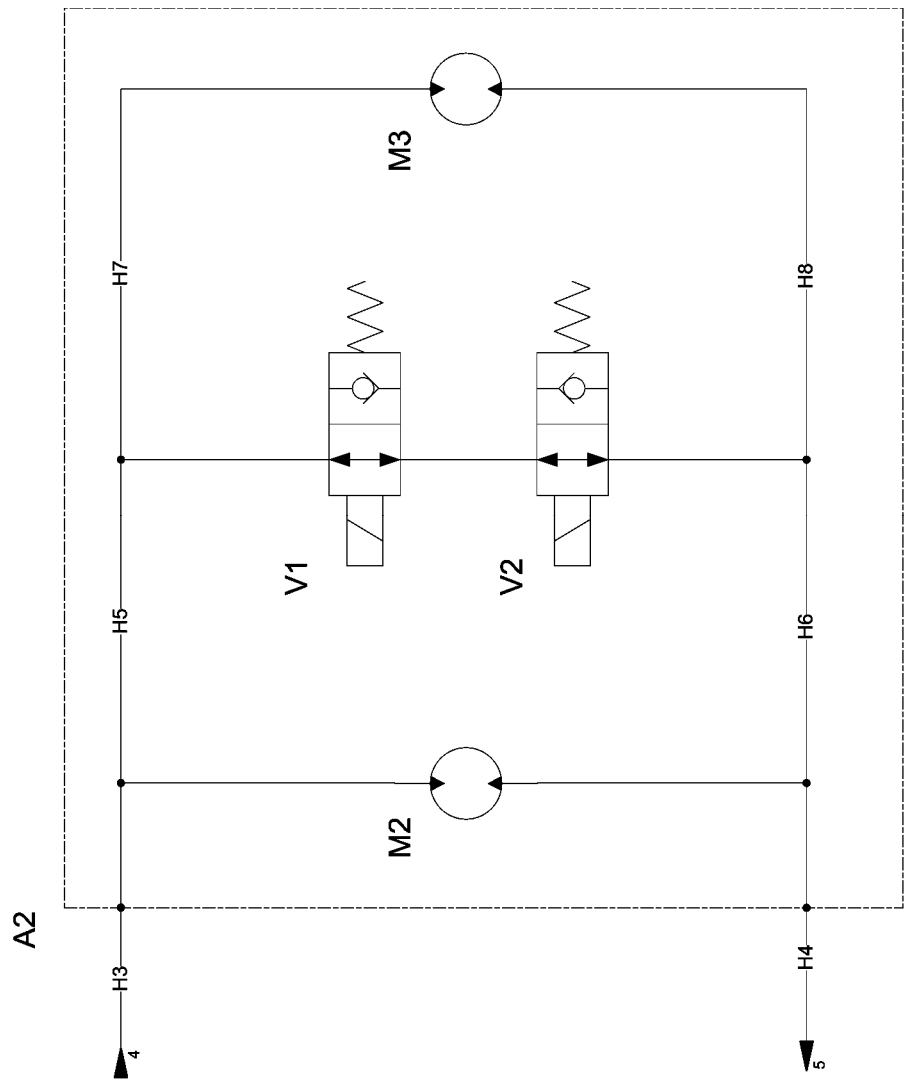
NO	DESIGNATION	REF	QTY
A1	ENGINE CONTROLLER	-	1
B1	EMERGENCY TEMPERATURE SWITCH	3109449001	1
B2	EMERGENCY PRESSURE SWITCH	3109501001	1
B3	THERMOSTATIC SWITCH, RADIATOR	3109501004	1
B4	REVERSE ALARM	*	1
B5	HORN	*	1
B6	COOLANT TEMPERATURE SENDER	3108449004	1
B7	OIL PRESSURE SENDER	3108501002	1
B8	THERMOSTATIC SWITCH, OIL COOLER	4190501004	1
E1	GLOW PLUG TIMER	-	1
E2	STROBE LIGHT	*	1
E3-E4	HEAD LAMP	*	2
E5-E6	SIDEMARKER LAMP	*	2
E7-E8	TAIL/BRAKE LIGHT	*	2
F1	AGC FUSE HOLDER	5069005	1
F2-F3	IN-LINE FUSE HOLDER	3118321006	2
F4	CIRCUIT BREAKER	3107000001	1
F5-F7	DIODE	367012	2
F8	MAXI FUSE HOLDER	3118501006	1
	MAXI BLADE FUSE 30A	3118501005	1
G1	ALTERNATOR	-	1
G2	BATTERY	-	1
H1	GLOW PLUG LAMP	-	1
H2	CHARGE LAMP	246212	1
H3	EMERGENCY LAMP	246212	1
K1	RELAY 12V, F/R INTERRUPT	3069010	1
K2	TIMER DELAY SW., SHUT DOWN	3129449001	1
K3	FLASHER RELAY	3064004	1
M1	STARTER	-	1
M2	ENGINE	-	1
M3	RADIATOR FAN	3129501004	1
M4	CAB HEATER FAN	6690002	1
M5	WIPER MOTOR	*	1
M6	OIL COOLER FAN	-	1
M7	CAB HEATER	*	1
P1	VOLTMETER	3069007	1
P2	FUEL GAUGE	686203	1
P3	TEMPERATURE GAUGE	3108449003	1
P4	OIL PRESSURE GAUGE	3108501003	1
P5	HOUR METER	3069008	1
R1	GLOW PLUGS	-	1
R2	FUEL SENDER	686207	1
S1	IGNITION SWITCH		1
	FOR GAS / DUAL FUEL ENGINE	3109449002	1
	FOR DIESEL ENGINE	3109501005	1
S2	SEAT SWITCH	3109000003	1

S3	FORWARD/REVERSE SELECTOR	266211	1
S4	FREEWHEEL SWITCH	55017	1
S5	HEADLIGHT SWITCH	1269004	1
S6	HORN BUTTON	*	1
S7	BRAKE SWITCH	246207	1
S8	TURN SIGNAL SWITCH	246050	1
S9	CAB HEATER SWITCH	55017	1
S10	FUEL SELECTION MODE	5069003	1
Y1	FUEL PUMP	-	1
Y2	CARBURATOR FUEL VALVE	-	1
Y3	CARBURATOR LPG VALVE	-	1
Y4	LPG SHUT-OFF VALVE	-	1
Y5-Y6	FREEWHEEL VALVE	SV16-23	2
	FREEWHEEL BLOCK KIT	4110501003	1
Y7	HYDRAUSTATIC DISTRIBUTOR	-	1
Y8	COOLING FAN SOLENOID	246101	2
Y9	DIESEL SOLENOID VALVE (ENGINE)	-	1
Y10	GLOW PLUG SOLENOID	246101	1
X1	ALTERNATOR CONNECTOR	-	1
X2	FUEL VALVE CONNECTOR	-	1
X3	GLOW PLUG TIMER CONNECTOR	-	1

**HYDRAULIC DIAGRAM**







<b>MOTREC INC.</b>			
SUBJECT:		HYDROSTATIC DRIVE DIAGRAM	
TITLE:		FREEWHEEL MANIFOLD	
VERSION :	01	DATE:	2005-06-17
AUTHOR : J. GAGNON		APPROVED:	
DRAWING #:		HYDROSTATIC DRIVE.VSD	

**PARTS LIST**

<b>NO</b>	<b>DESIGNATION</b>	<b>REF</b>	<b>QTY</b>
A1	HYDROSTATIC PUMP	5070014	1
A2	FREEWHEEL MANIFOLD	4110501003	1
R1	OIL COOLER	4190501003	1
S1	MACHINE START-UP ADJ. SCREW		
S2	POWER LIMITER ADJ. SCREW		
S3	CHARGE PRESSURE ADJ. SCREW		
S4	MIN. CHARGE PRESSURE ADJ. SCREW		
V1-V2	FREEWHEEL SOLENOID	SV16-23	2
V4	HYDROSTATIC VALVE		
M2-M3	HYDRAULIC MOTOR	Contact manuf.	2
M1	ENGINE	-	1

**MOTREC ILLUSTRATED ACCESSORIES**

 <p>Strobelight, polemount Amber 12-80V: 3116000001 Red 12-80V: 2469001 Blue 12-80V: 3690008</p>	 <p>Red Tail/Brake light Housing: 3069012R Bulb 12V: 3117240001</p>	 <p>Headlight Left: 3111480003 Right: 3111480004 Bulb H/L: 3117480001 Bulb Turn: 3117480003 Bulb Mark: 3117480002</p>	 <p>Horn button VIP 2330014</p>
 <p>Strobelight, cab mount Amber 12-48V: 3116250001 Red 12-48V: 3069026 Blue 12-48V: 3069014 Amber 72-80V: 3116720001 Red 72-80V: 3116720002 Blue 72-80V: 3116720003</p>	 <p>Back-up lamp Grommet: 3269001 12V: 3669012 24V: 3669012A</p>	 <p>Turn signal switch 246050</p>	 <p>Horn button, column mount 246210</p>
 <p>Amber turn lamp 12V: 3069020 Bulb 12V: 3069021 Multi-LED amber turn lamp Round Light: 3111000010 Grommet: 3111000008 Plug: 3111000009</p>	 <p>Clear lamp 12V: 3069012 Bulb 12V: 1269008</p>	 <p>Multi-LED Red Tail/Brake Light: 3111000006 Grommet: 3111000008 Plug: 3119000009</p>	 <p>Horn button, dash mount 266210</p>
 <p>Red Tail/Brake light Grommet: 3269001 Plug: 246012A 12V: 2469021 24V: 2469022</p>	 <p>Pedestral head lamp 12V: 2569001 Bulb 12V: 2569001B Bulb 24V: 4469001</p>	 <p>Multi-LED Back-up Light: 3111000007 Strobe light: 3111000013 Grommet: 3111000008 Plug: 3119000009</p>	 <p>Horn button 3109250001</p>
	 <p>Headlight Left: 3111480003 Right: 3111480004 Bulb H/L: 3111480006 Bulb Turn: 3111480008 Bulb Mark: 3111480007</p>	 <p>Red Tail/Brake light 12V: 386002</p>	 <p>Limit switch 3030015</p>  <p>Horn 12V: 246003 24V: 246013</p>

<div data-bbox="253 239 428 415"></div> <p>Analog Voltmeter 12V : 3069007 24V : 2469002 36-48V : 3669002</p> <hr/> <div data-bbox="253 583 435 781"></div> <p>HOBBS Gauge 24V: 2469026 36V: 3069038 48V: 4869037</p> <hr/> <div data-bbox="250 949 435 1096"></div> <p>DC-DC converter, 10A 12-48V: 3069019</p> <hr/> <div data-bbox="246 1192 438 1318"></div> <p>DC-DC Converter, 25A 12-48V: 3124000002 72-80V: 3124880001</p>	<div data-bbox="587 239 773 344"></div> <p>Wiper motor 12V: 3113000001 24V: 486211</p> <hr/> <div data-bbox="587 554 769 625"></div> <p>Wiper arm 2800000001</p> <hr/> <div data-bbox="587 781 769 844"></div> <p>Wiper blade 14" Blade: 2800000002 18" Blade: 2800000003</p> <hr/> <div data-bbox="587 1058 773 1142"></div> <p>Pantograph wiper arm 246233A</p> <hr/>	<div data-bbox="932 252 1104 310"></div> <p>Pantograph wiper blade 246233</p> <hr/> <div data-bbox="932 478 1101 613"></div> <p>Cab heater 12V: 3103300001 36V: 3669008 48V: 4869020</p> <hr/> <div data-bbox="928 802 1104 915"></div> <p>12V Dome light 3669006</p> <hr/> <div data-bbox="948 1008 1094 1209"></div> <p>12V Fan 3669013</p> <hr/>	<div data-bbox="1273 243 1435 420"></div> <p>Headlamp 12V:3111250002</p> <hr/> <div data-bbox="1260 495 1442 688"></div> <p>Headlamp 12V: 3111300001 Bulb 12V: 3111300002</p> <hr/> <div data-bbox="1266 831 1425 919"></div> <p>Red Pilot light 12V: 246212 Bulb 12V: 246212B</p> <hr/> <div data-bbox="1208 1058 1474 1184"></div> <p>Back-up alarm or Motion beeper 12-48V : 3100000001 72-80V : 3105720001 12-24V Adjustable: 3100000002</p>
---	---	---	--